



About CamTran

CamTran is the public transportation authority for Cambria County, PA. Providing fixed-route, Reserve-a-Ride, and other specialized programs, CamTran makes transportation possible for the people of Cambria County.

Whether you need to commute to work, school, or appointments, CamTran has a way to get you there.

CamTran is customer-driven by a professional team, providing affordable, clean, safe, reliable, and convenient mobility services for the public.



www.camtranbus.com
[Live.camtranbus.com](http://live.camtranbus.com)
 CamTran: 814-535-5526
 502 Maple Avenue Johnstown 15901



CamTran+ operates Fixed Route, ADA, Persons with Disabilities, and Reserve-A-Ride services in Northern Cambria County. Fixed routes provide service to Patton, Northern Cambria, St. Benedict, Hastings, Carrolltown, Ebensburg, Cresson, and Johnstown.

Bus service is also available to Altoona through both fixed route and Reserve-A-Ride Service.

Call us today to learn more.

About CamTran+

1-800-252-3889
 1226 North Center St. Ebensburg, PA 15931



Urban Rider Information



Guide to Ride

Know before you go!

Riding the urban division transit system

www.camtranbus.com
live.camtranbus.com
 814-535-5526
 TDD 814-539-1149

Bus. Bike. Incline. CamTran.

Preparing for your ride

How will I pay? To ride, you do not need exact change for your fare. Simply put your money in the fare box. If you do not have the exact change for your fare you will be issued a change card that you can use towards a future ride.

Which routes service my area? CamTran's urban division services the Greater Johnstown area. To discover the schedule for your area, log onto our website at camtranbus.com to print out schedules or see the route maps and real-time schedules at live.camtranbus.com.

How do I get on the bus? Look for a CamTran bus stop sign fixed to a pole. If you stand next to the sign, the bus operator will see you. Make sure you are safely visible to the operator when the bus approaches. Be sure to get there about 3-5 minutes early just in case.

How do I get off the bus? When the bus approaches your destination's stop, press the "stop requested" yellow strip or pull on the bell rope by the window. Do this about a half a block before you want to get off or immediately after the bus leaves the previous stop. If you are not sure when to get off, ask the operator when you board to let you know when you're close.

Did you know?

Did you know?

In Pennsylvania, older adults over age 65 can ride for free on any public transit system. The revenues from PA Lottery sales goes towards covering the cost of senior riders. All you have to do is call CamTran at 814-535-5526 or 1-800-252-3889 (Ebensburg) to receive your application. With that and a proof of age, you'll be riding for free in no time!

Bike Racks

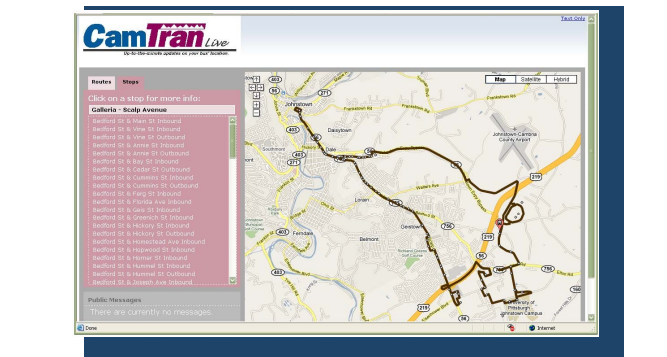
Bring your bike along for free!

As a mobility provider, we recognize the growing popularity of cycling as a way of commuting. As such, we make sure that all of our urban division buses are equipped with a bike rack on the front of the bus. These racks can hold up to two bikes at a time. It is the rider's responsibility to secure her bike on the rack, and CamTran is not responsible for any damages occurred. These racks are safe and secure, so bring your bike on for free!

Technology

Where's my Bus?

In December 2009, we launched CamTran Live (<http://live.camtranbus.com>). This site allows urban division riders to see where their bus is in real-time, meaning whether it's running late or right on time. Now you can wait for the bus in the comfort of your own home!



CamText

Sometimes unexpected things happen, and we have to suddenly detour a bus route. To keep you in the loop, we've created CamText, a text message alert system. Register at camtranbus.com to receive updates on schedule changes, detours, and promotions right on your cell phone!

Tip!

Tip! Save money by purchasing your passes in advance. They don't officially "activate" until you swipe them on your first ride. That way, you won't have to pay a full fare to get to our office or the Bus Stop Shop to buy your 31, 3, or 1 Day pass.

Buying your pass

Know where to go

From the driver on a fixed route bus

You can pay your fare by cash and purchase the Student 1 Day pass from the driver.

Bus Stop Shop in the Transit Center

At the Bus Stop Shop in the Transit Center, you can purchase any pass, including the 31 Day, 3 day, or 1 Day pass. You can also receive an application for Reduced Fare or Senior Passes.

The store hours are from

7 a.m. to 3 p.m. Monday through Friday.

Woodvale Office on 502 Maple Avenue

Stop by the Woodvale Office to purchase your passes, including the 31 Day, 3 day, or 1 Day pass. You can also receive an application for Reduced Fare or Senior Passes as well as all of CamTran and CamTran+'s programs, such as ADA Paratransit, Reserve-A-Ride, and Persons with Disabilities. The office is open from 8:30 a.m. to 4:30 p.m. Monday through Friday. We can also be reached at 814-535-5526.

Reduced Fare Information

Any person who possesses a Medicare card and is under 65 years of age. Any person who qualifies for Medicare need not have the form certified by a physician or social service agency, but may obtain a card from the transit agency directly upon presentation of his or her Medicare Card. A person over 65 years of age qualifies under Pennsylvania's Free Transit Program for Senior Citizens.