

CamTran

Connecting Cambria County



Board of Directors

Ed Cernic, Jr., Chairman
Fred Kuzma, Vice Chairman
Timothy Whited, Secretary
Thomas C. Gramling, Sr., Treasurer
Bishop Joseph McGauley, III
William Gentile
Joseph Slifko
Frank Arcurio
Trish Corle

Rose M. Lucey-Noll, Executive Director

502 Maple Avenue
Johnstown, PA 15901

814-535-5526

Fax 814-536-5951

jyoder@camtranbus.com

www.camtranbus.com



2016 in Review

Fiscal year 15/16 was a progressive year at CamTran. As part of the PennDOT P3 project, CamTran broke ground for a public/private CNG fueling station. Additionally, CamTran continued the proud tradition of being leaders in the community by being active in various projects and programs in an effort to give back.

Progressive Initiatives

- AVAIL IT Upgrade
- ECOLANE Shared Ride Software Upgrade
- Find my Ride Trip Planning Education (PennDOT Pilot)
- Inclined Plane Website Redesign

Future Projects

- Rehabilitation of the Inclined Plane
- Continuing Transition to CNG/Bi-Fuel Buses

CamTran

Cambria County Transit Authority

Annual Report 2016



CamTran...Connecting Cambria County!

A MESSAGE

FROM OUR

EXECUTIVE DIRECTOR

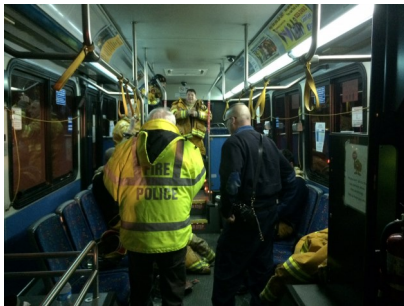


Public transportation is alive and well in Cambria County. In FY 15/16, CamTran transported 1.1 million passengers throughout Cambria County. Customers utilized fixed route, shared ride and park and ride service for a variety of reasons including but not limited to work, doctor's appointments and shopping.

We have experienced an increase in our shared ride service due to our direct marketing approach and one-on-one interaction with Human Service Agencies and prospective customers. It is through efforts like this that we have seen the biggest impact in reaching new riders.

As we look to the future of public transportation we are encouraged by the trends that we see across the country. Compressed natural gas (CNG) buses, smart card technology and real time customer information are things that we look to capitalize on and work to our advantage to enhance the customer experience and stay on the cutting edge of public transportation in Cambria County.

Over the years, CamTran and local fire, police and EMS officials have crafted a unique relationship through training and frequent communication. This has proven to be a beneficial relationship as first responders know in the event of an emergency CamTran will be there to assist in any capacity.



CamTran Gives Back

On Thursday, January 5, CamTran Executive Director, Rose Lucey-Noll presented the United Way with a check towards the United Way's annual fundraising campaign. The presentation took place in the boardroom of CamTran's Woodvale office.

This year CamTran grew its donated amount by 38% from last year. This is a direct result of the collaborative approach taken by CamTran and the United Way. Through various meetings with United Way representatives and a new creative approach by CamTran, the



Jenn Gojmerac, CamTran Human Resources Assistant, Matt Spangler, United Way, Bill McKinney, United Way President and CEO, Ed Cernic, Jr., CamTran Board Chairman, Tom Gramling, CamTran Board Member, Bill Gentile, CamTran Board Member, Rose M. Lucey-Noll, CamTran Executive Director, Tabatha McCormick, CamTran Human Resources Manager

2016 fundraising campaign was a success.

"We truly appreciate the support of Cam Tran and their employees. It great to see everyone rally around the work of the United Way on our community. These funds will go directly to over 30 programs that make a measureable difference in the lives of many in need in our community," says United Way President & CEO, Bill McKinney. "We thank them for their support!"

"The employees of CamTran approached this year's campaign with a community first attitude which resulted in a successful organizational campaign," says CamTran Executive Director Rose M. Lucey-Noll. "CamTran is integral in the community and we support the efforts and programs funded by the United Way."

Inclined Plane Flag Monument Gets Rehabbed

Working with the Johnstown Monument Committee, CamTran was able to help breathe new life into an almost 30-year old monument atop the Inclined Plane. Images, Etc. took on the task of restoring the plaque. After several hours of intense work the plaque looked as good as new.



WHERE PUBLIC TRANSPORTATION GOES COMMUNITY GROWS

Forward Thinking Leads to CNG Groundbreaking

PennDOT Deputy Secretary for Multimodal Transportation, Toby Fauver, joined Cambria County Transit Authority (CamTran) Executive Director Rose Lucey-Noll, Board Chairman Ed Cernic, Jr. and state and local officials to break ground for a new Compressed Natural Gas (CNG) fueling station in Johnstown.

Earlier this year it was announced that Trillium CNG team, which includes Larson Design Group of Williamsport, had been selected for the \$84.5 million P3 project.

CamTran is the most recent agency to benefit from PennDOT's natural gas transit fueling station Public Private Partnership (P3) project.

The construction is estimated to be a 10 week build. The station will be open 24/7 to the public.

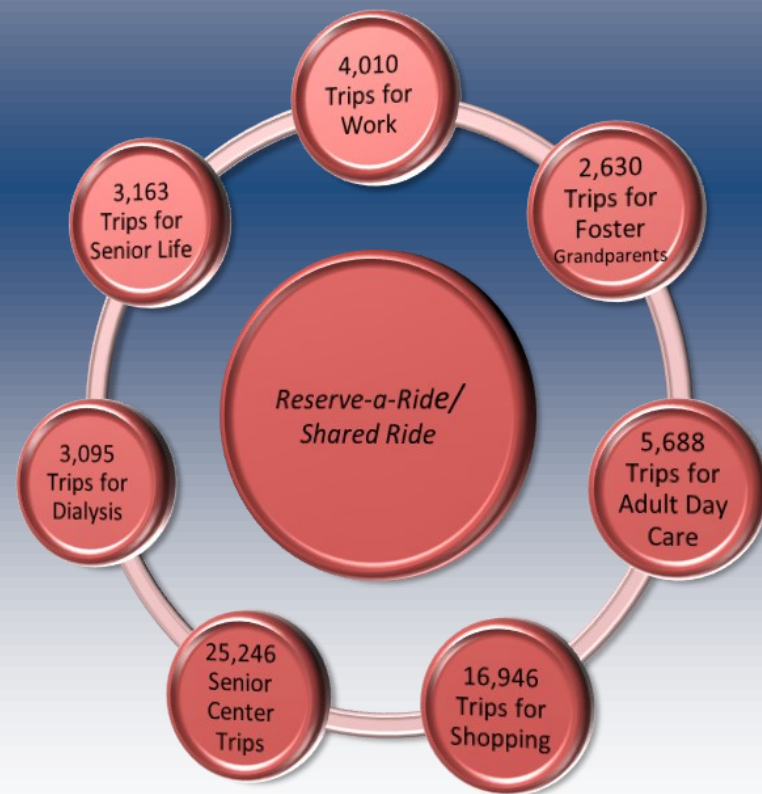


(l-r) Johnstown Mayor Frank Janakovic, Cambria County Commissioner Mark Wissinger, Cambria County Commissioner B.J. Smith, Cambria County President Commissioner Tom Chernisky, CamTran Executive Director Rose Lucey-Noll, Ed Cernic Sr., CamTran Board Chairman Ed Cernic, Jr., Guido Struyk, Trillium, State Representative Bryan Barbin, Deputy Secretary for Multimodal Transportation Toby Fauver, CamTran Board Member Tim Whited.

CNG
Clean Air
Technology



Reserve-a-Ride Service... *Helping Customers Stay Active* *In Cambria County*



CamTran 2015-2016 STATISTICS

URBAN SERVICE

Passengers: 1,051,188
Total Hours of Service: 72,003
Total Miles Operated: 835,912
Total Revenue Miles: 783,775
Operating Revenues: \$834,596
Federal Funding: \$0.00
State Funding: \$5,361,450
Local Funding: \$624,849
Operating Expenses: \$6,820,895



RURAL SERVICE

Passengers: 135,023
Total Hours of Service: 37,890
Total Miles Operated: 758,601
Total Revenue Miles: 633,695
Operating Revenues: \$998,303
Federal Funding: \$0.00
State Funding: \$1,690,629
Local Funding: \$107,534
Operating Expenses: \$2,796,466



INCLINED PLANE

Inclined Plane Passengers: 65,268
Total Hours of Service: 948
Total Miles Operated: 2,405
Total Revenue Miles: 2,405
Operating Revenues: \$212,780
Federal Funding: \$0.00
State Funding: \$436,650
Local Funding: \$53,323
Operating Expenses: \$702,753

**Johnstown
Inclined Plane**

139 Employees 31 Urban Buses 34 Rural Buses

CamTran Partners with the Salvation Army to Adopt-a-Family

This holiday season, CamTran once again participated in the Adopt-a-Family Program through the Salvation Army. Our participation in this program allows CamTran and its employees the opportunity to make the holidays a little brighter for a family in need. This year's family had four children. Each child has a specific wish list that includes their age, gender, clothing size and hobbies/interests. We raised \$230.00, received several toy and outfit donations and were able to purchase everything on their Christmas wish lists.



CamTran Helps Flood Victims

With community, business and employee support CamTran stuffed a bus with items to aide the victims of the horrific floods in West Virginia. On July 11, CamTran took the supplies to West Virginia and were received with appreciative open arms.



ANNUAL CHRISTMAS OVER THE CITY EVENT A SUCCESS

On Saturday, December 10, the Inclined Plane hosted the annual Christmas Over the City event. This event has been a staple at the Inclined Plane for over 20 years



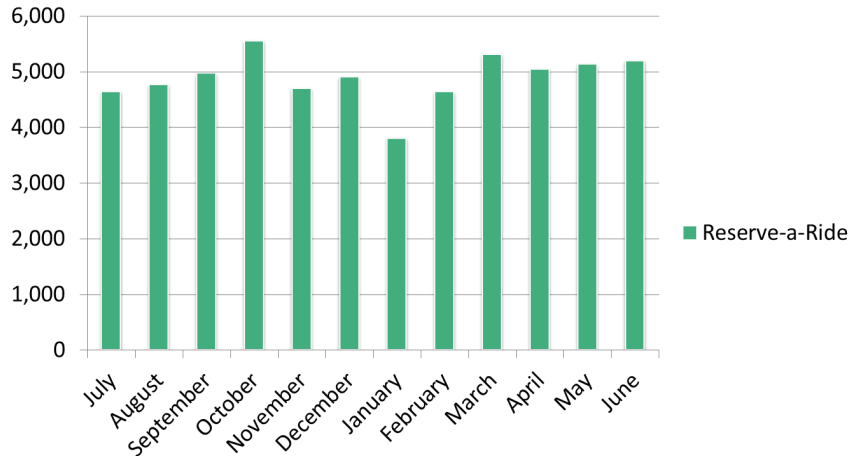
There were free photos with Santa, free treat bags stuffed and children who attended the event rode the historic Inclined Plane free with a paying adult.

This year CamTran partnered with The Pennsylvania State Association of Boroughs (PSAB) as well as Westmont Borough in a joint venture where PSAB made a generous donation to ensure each child who attended the event would receive a candy bar.

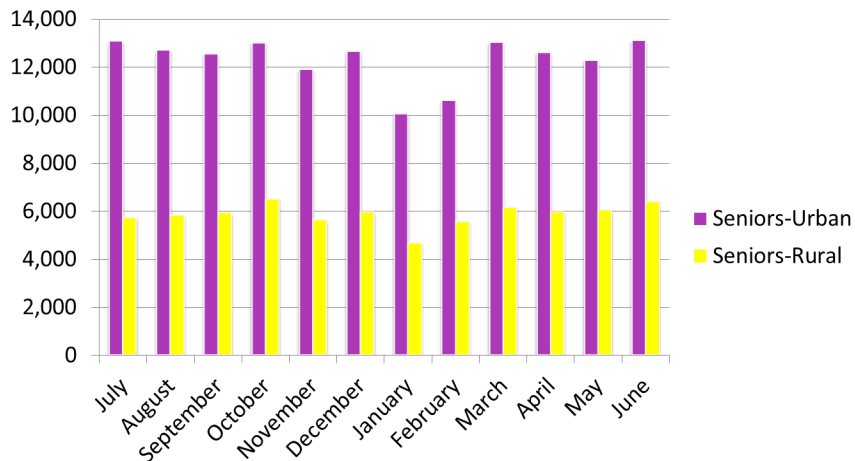
Bus...Bike...Incline

2015-2016 RIDERSHIP

Reserve-a-Ride/Shared Ride

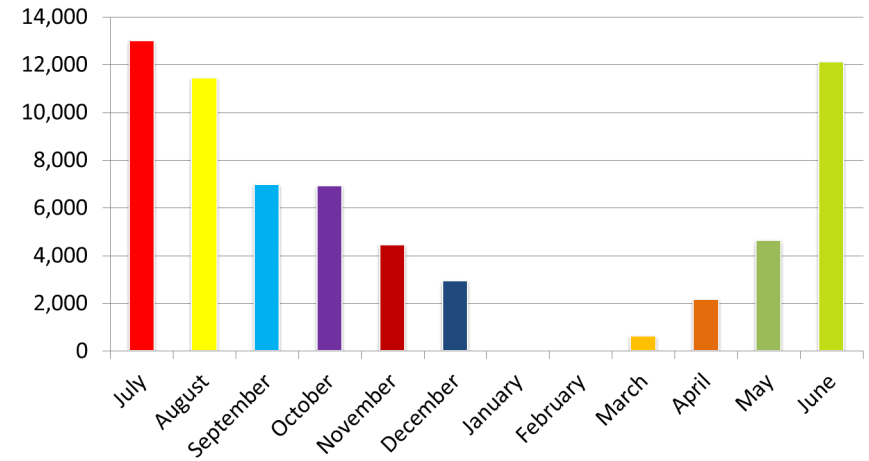


Seniors 65 and Older



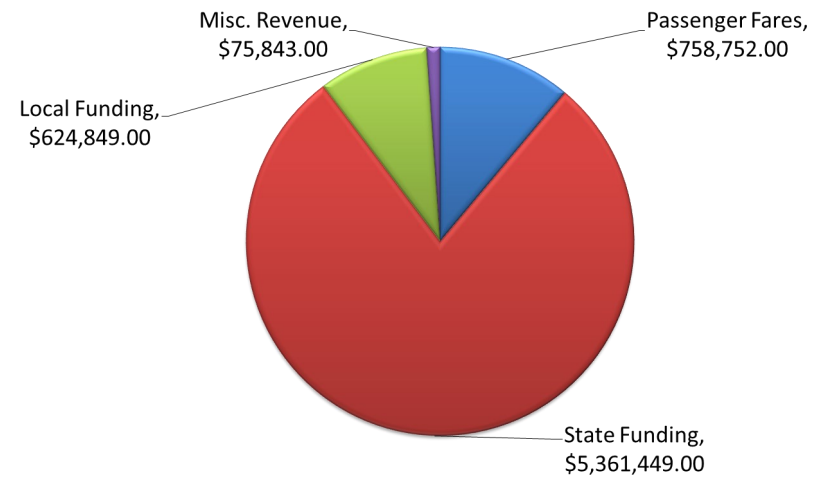
2015-2016 RIDERSHIP

2015-2016 Inclined Plane Ridership



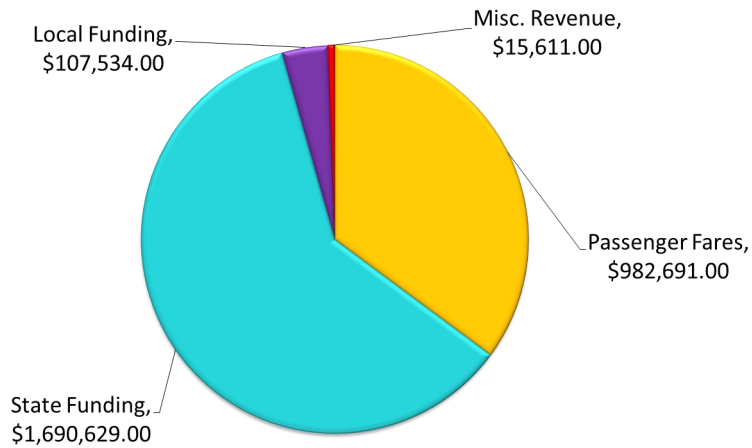
2015-2016 REVENUE & FUNDING

Urban Service

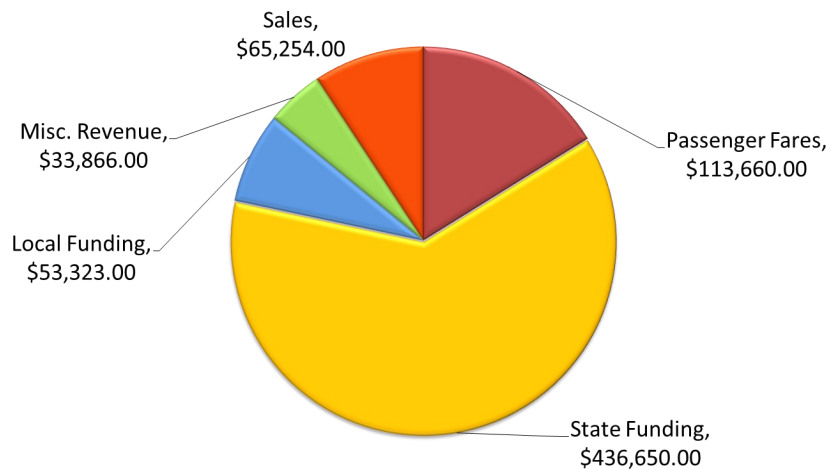


2015-2016 REVENUE & FUNDING

Rural Service

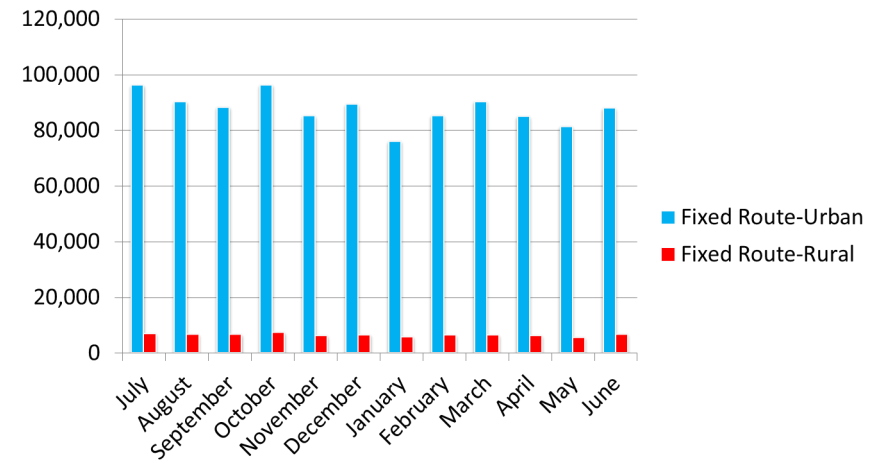


Inclined Plane



2015-2016 RIDERSHIP

Fixed Route



Paratransit (ADA)

